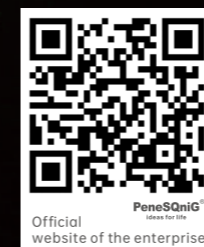


2023
PRODUCT
CATALOGUE



Wall Switch & Socket



PeneSQniG[®]
ideas for life



Product color display

H10 series

Classic PC Series

The Artistic Switch And Socket Experience



Glass panel
transparent

No time



Usage scenario display



H10 series



H1011 1gang 1way switch	H1021 2gang 1way switch	H1011N 1gang 1way switch W/N	H1021N 2gang 1way switch W/N	H1088D Double USB outlet 2100mA
H1012 1gang 2way switch	H1022 2gang 2way switch	H1012N 1gang 2way switch W/N	H1022N 2gang 2way switch W/N	
H1041 1G intermediate switch				
100PCS 49*42.5*24.5CM	100PCS 49*42.5*24.5CM	100PCS 49*42.5*24.5CM	100PCS 49*42.5*24.5CM	80PCS 49*42.5*24.5CM



H1029 1gang Russian socket	H1039 1gang French socket	H1049 1gang Schuko socket	H1090 Fan speed controller 600W	H1009 Light dimmer 600W
				H1009L LED dimmer 200W
100PCS 49*42.5*24.5CM	100PCS 49*42.5*24.5CM	100PCS 49*42.5*24.5CM	80PCS 49*42.5*24.5CM	80PCS 49*42.5*24.5CM



H1010 1gang Bell push switch	H1010N 1gang bell push switch W/N	H1024 1gang Tel socket	H1024D Double Tel socket	H1025 1gang TV socket
		H1028 1gang Data socket	H1028D Double Data socket	
100PCS 49*42.5*24.5CM	100PCS 49*42.5*24.5CM	100PCS 49*42.5*24.5CM	100PCS 49*42.5*24.5CM	100PCS 49*42.5*24.5CM



H1026 1gang satellite socket	H1059 Dust cap Schuko socket	H1039D Double French socket	H1049D Double Schuko socket
100PCS 49*42.5*24.5CM	100PCS 49*42.5*24.5CM	50PCS 49*42.5*24.5CM	50PCS 49*42.5*24.5CM

H12 series



H1211 1gang 1way switch	H1221 2gang 1way switch	H1211N 1gang 1way switch W/N	H1221N 2gang 1way switch W/N	H1288D Double USB outlet 2100mA
H1212 1gang 2way switch	H1222 2gang 2way switch	H1212N 1gang 2way switch W/N	H1222N 2gang 2way switch W/N	
H1241 1G intermediate switch				
100PCS 49*42.5*24.5CM	100PCS 49*42.5*24.5CM	100PCS 49*42.5*24.5CM	100PCS 49*42.5*24.5CM	80PCS 49*42.5*24.5CM



H1229 1gang Russian socket	H1239 1gang French socket	H1249 1gang Schuko socket	H1290 Fan speed controller 600W	H1209 Light dimmer 600W
				H1209L LED dimmer 200W
100PCS 49*42.5*24.5CM	100PCS 49*42.5*24.5CM	100PCS 49*42.5*24.5CM	80PCS 49*42.5*24.5CM	80PCS 49*42.5*24.5CM



H1210 1gang Bell push switch	H1210N 1gang bell push switch W/N	H1224 1gang Tel socket	H1224D Double Tel socket	H1225 1gang TV socket
		H1228 1gang Data socket	H1228D Double Data socket	
100PCS 49*42.5*24.5CM	100PCS 49*42.5*24.5CM	100PCS 49*42.5*24.5CM	100PCS 49*42.5*24.5CM	100PCS 49*42.5*24.5CM



H1226 1gang satellite socket	H1259 Dust cap Schuko socket	H1229D Double French socket	H1239D Double Schuko socket
100PCS 49*42.5*24.5CM	100PCS 49*42.5*24.5CM	70PCS 49*42.5*24.5CM	50PCS 49*42.5*24.5CM

Feature



The claws are surrounding by invaginated structure, it make installation convenient and rapid without hurting hands.



The strong and steady structure because the base is multipoint riveted with steel frame.



Anti-back screws prevent the screw from dropping and missing when unscrewing.



The high strength PA material (960°C) make sure the better fireproof performance of the base.



We adopt "arch bridge" idea for base design, increased the touching space of wiring, meanwhile make the base the stable without deformation.

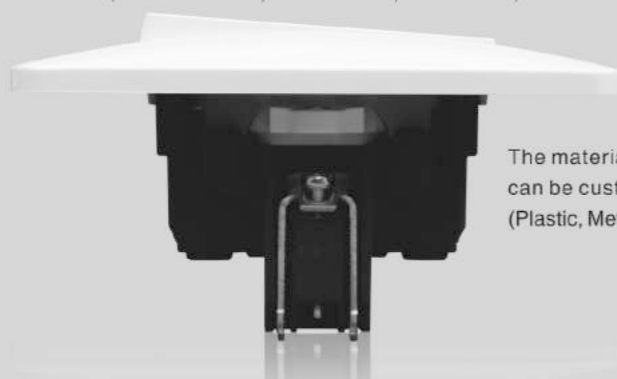
Colorful Life

Plastic

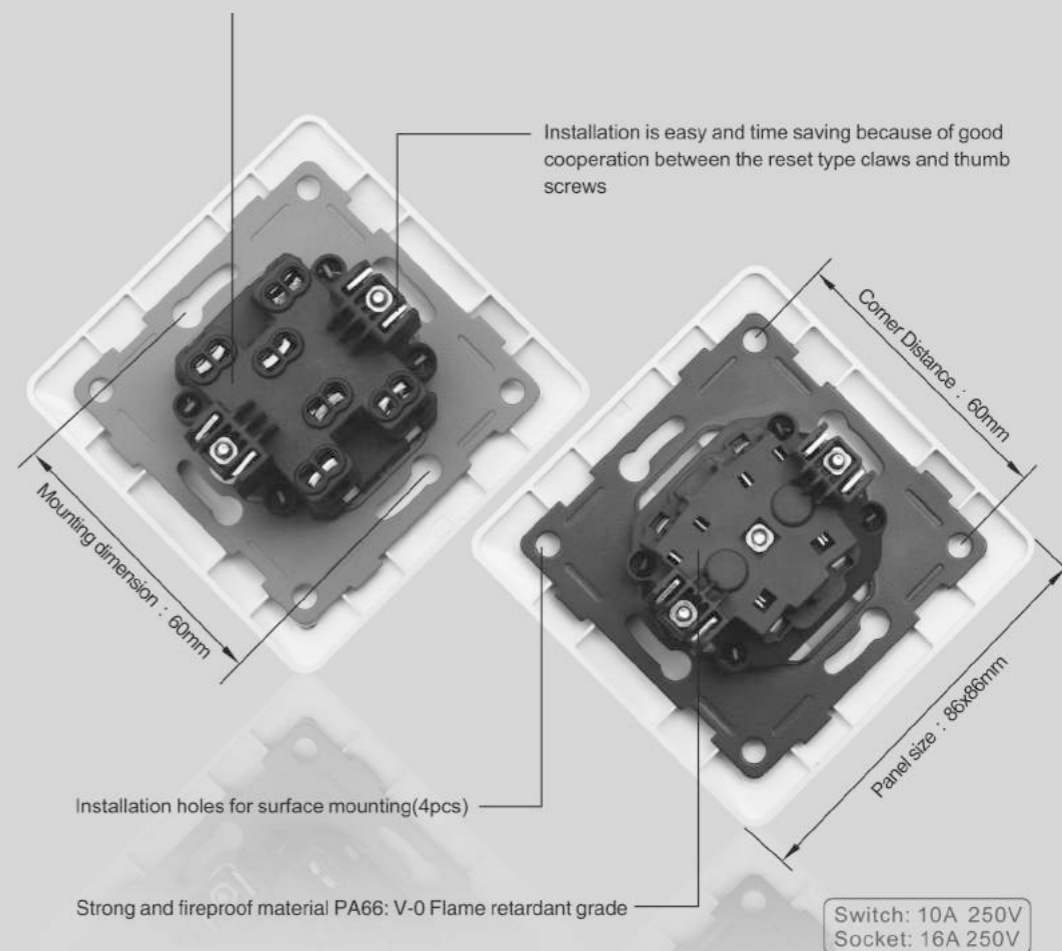
Metal

Glass

Acrylic



The material and color of panel plate can be customized.
(Plastic, Metal, Glass, Acrylic and so on)



Switch Highlight



The original strong-breaking technology guarantee the switch ON/OFF safe and reliable.



LED neon is good at power-saving and environmental protection.



The grade II shock absorption make the voice down on switching.

Socket Highlight

100% Phosphor Copper

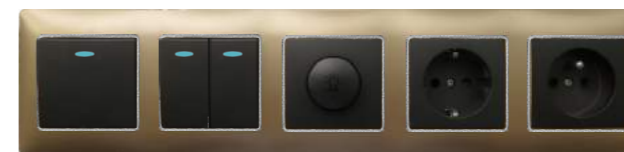
Socket cooper parts is made of Phosphor bronze(94% Cu and 6% Sn) that is high strength, high elasticity with good Wear-Resistance. Moreover, it's made by one-time forming without riveting. Safety and power saving.

10000 times

The original "V" design of automatic repairing ensure the copper parts good performance even after 10000 times usage.

15000 times

The Earth pole is designed by a scientific"C" structure, keep the high strength and elasticity after repeated swapping.



PeneSQniG[®]
ideas for life

Switch
socket.



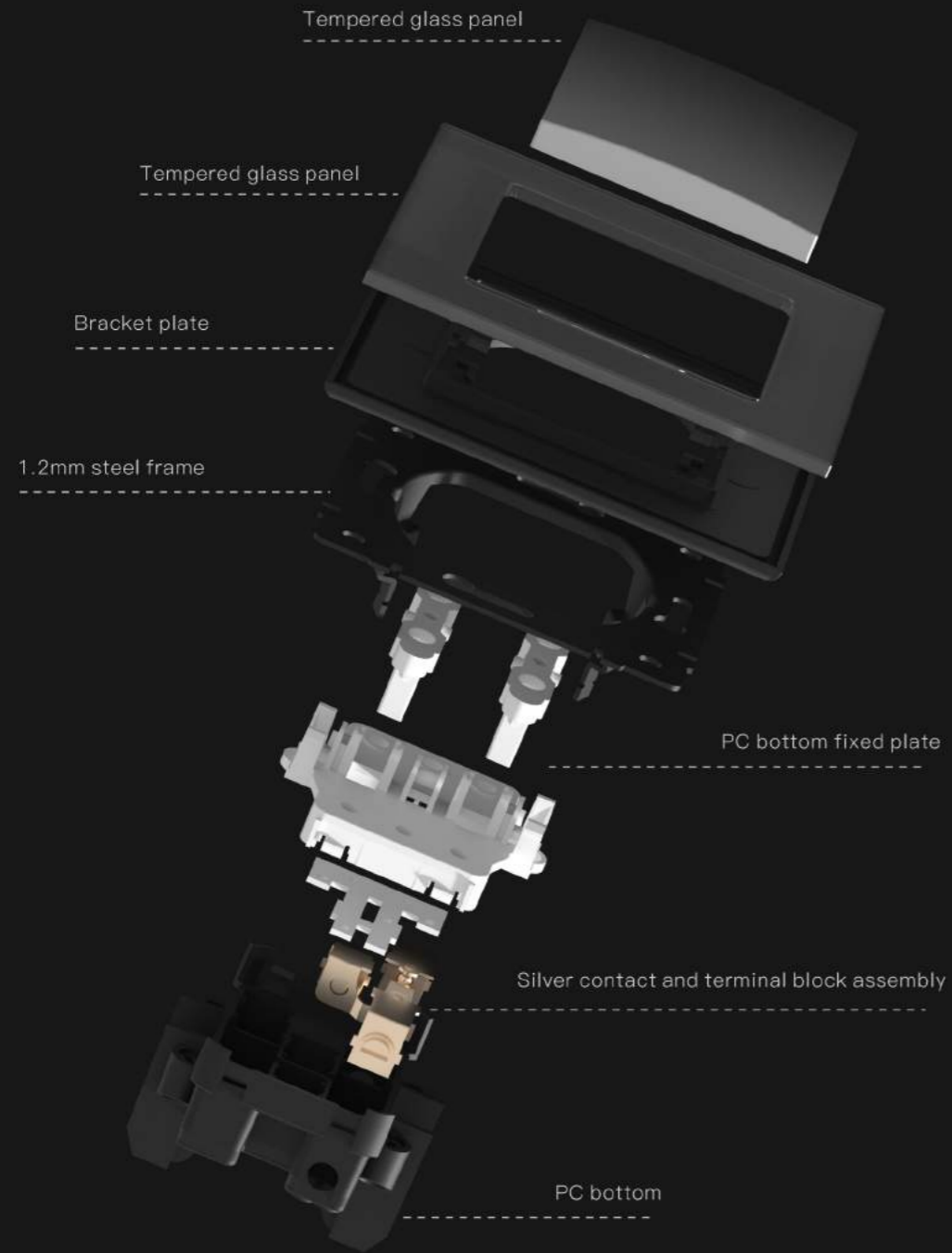


UK OPEE Electric adheres to international technology, European advanced design concept and years of accumulated mature technology, and devotes itself to the humanization, individuation, high grade and other aspects of the product to create high-quality electrical products in rigorous and meticulous production process. In the fierce market competition, adhering to continuous innovation, superior quality and excellent design makes opee products enjoy a good reputation so far.

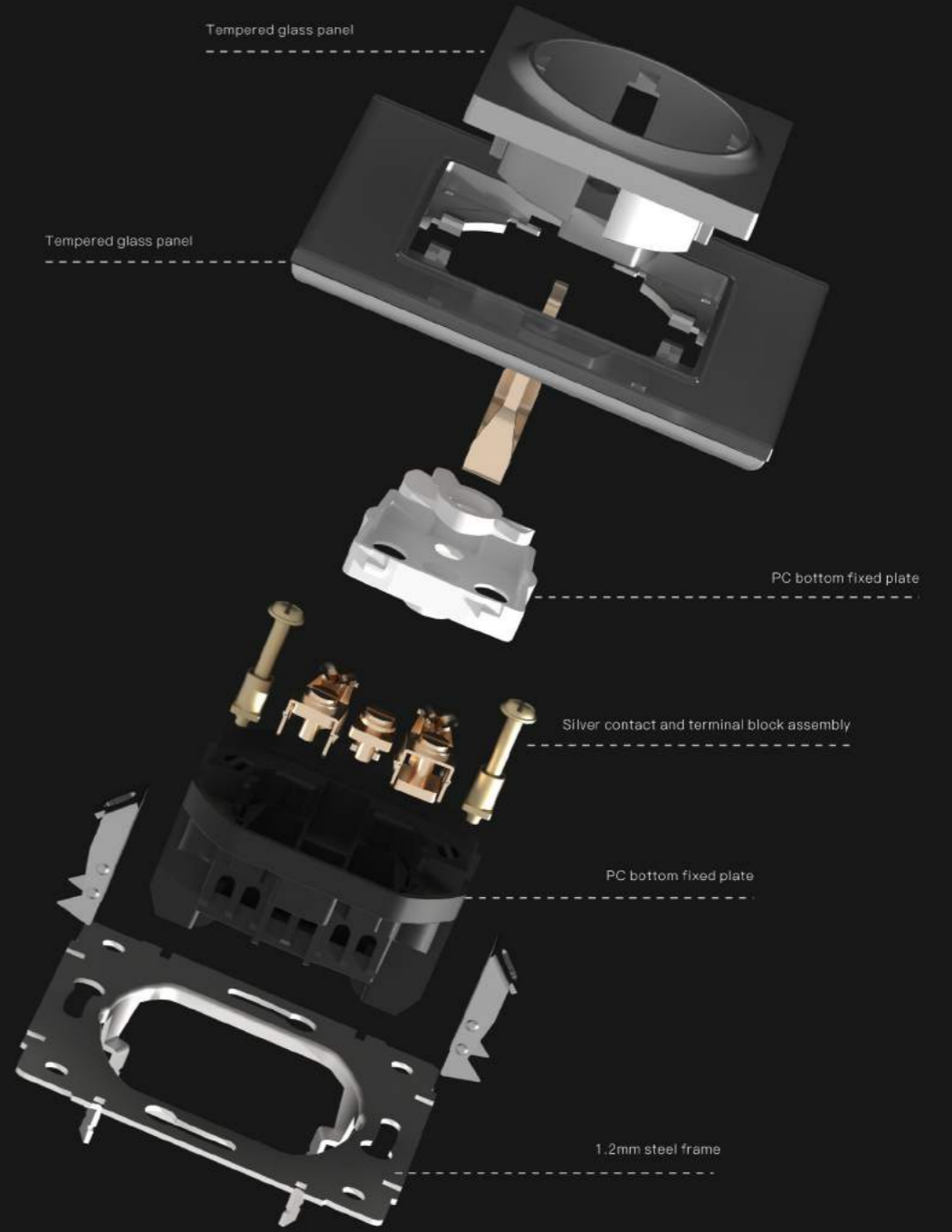
The business philosophy of producing high-quality products and serving the whole world is conceived in every product of OPEE. It strives to focus on every detail and create personalized and stylish electrical products for consumers.



Switch decomposition

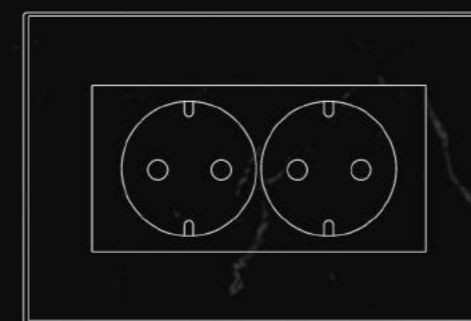
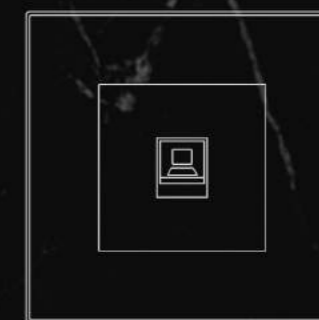


Socket decomposition

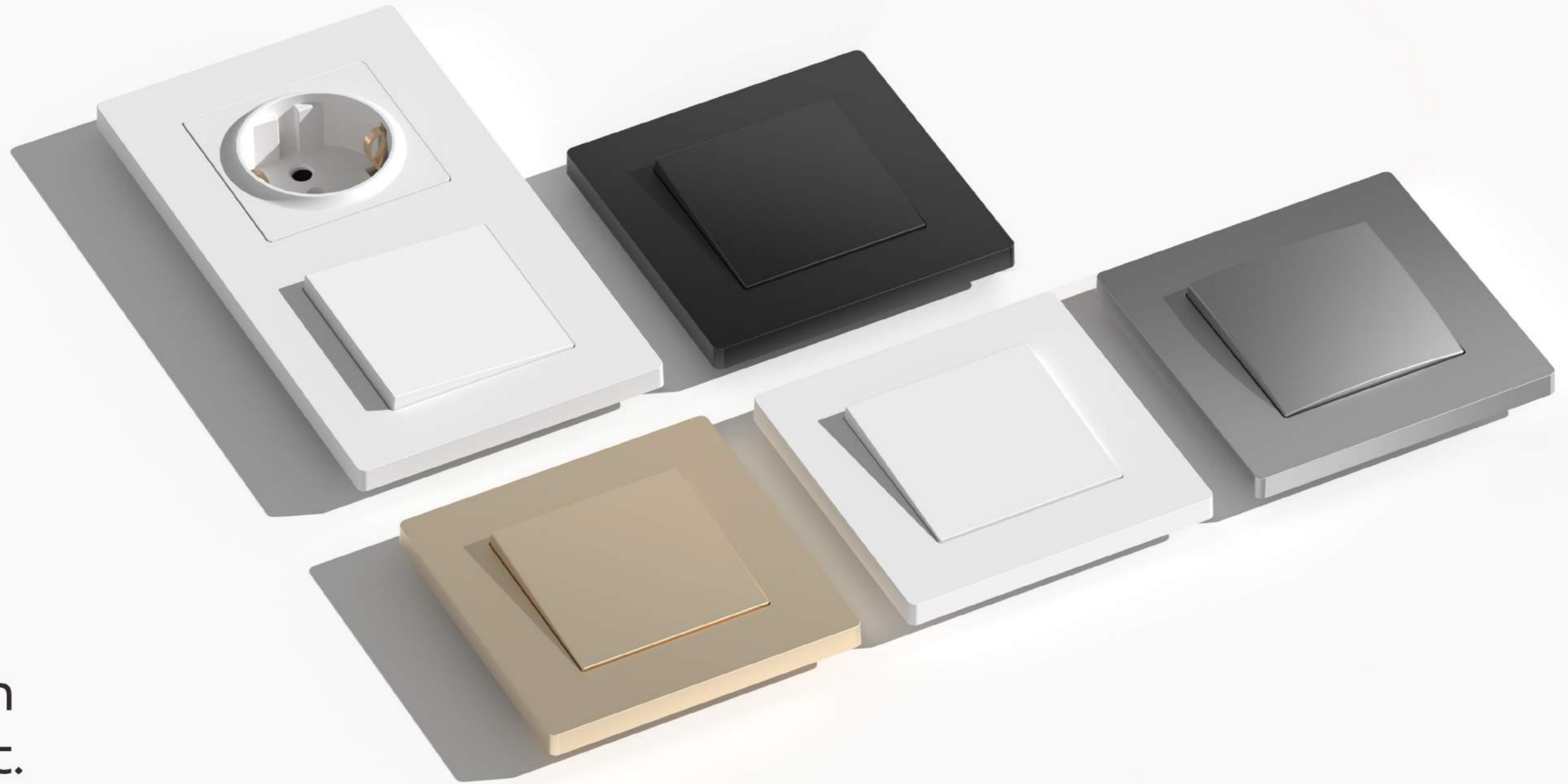


P50 PC Series.

PeneSQniG[®]
ideas for life



The most distinctive feature of OPEE switch is its beauty and harmonious interaction with carefully designed walls. The lighting switch is elegant and beautiful, which makes rich wallpaper design or mural also does not eclipse at all.

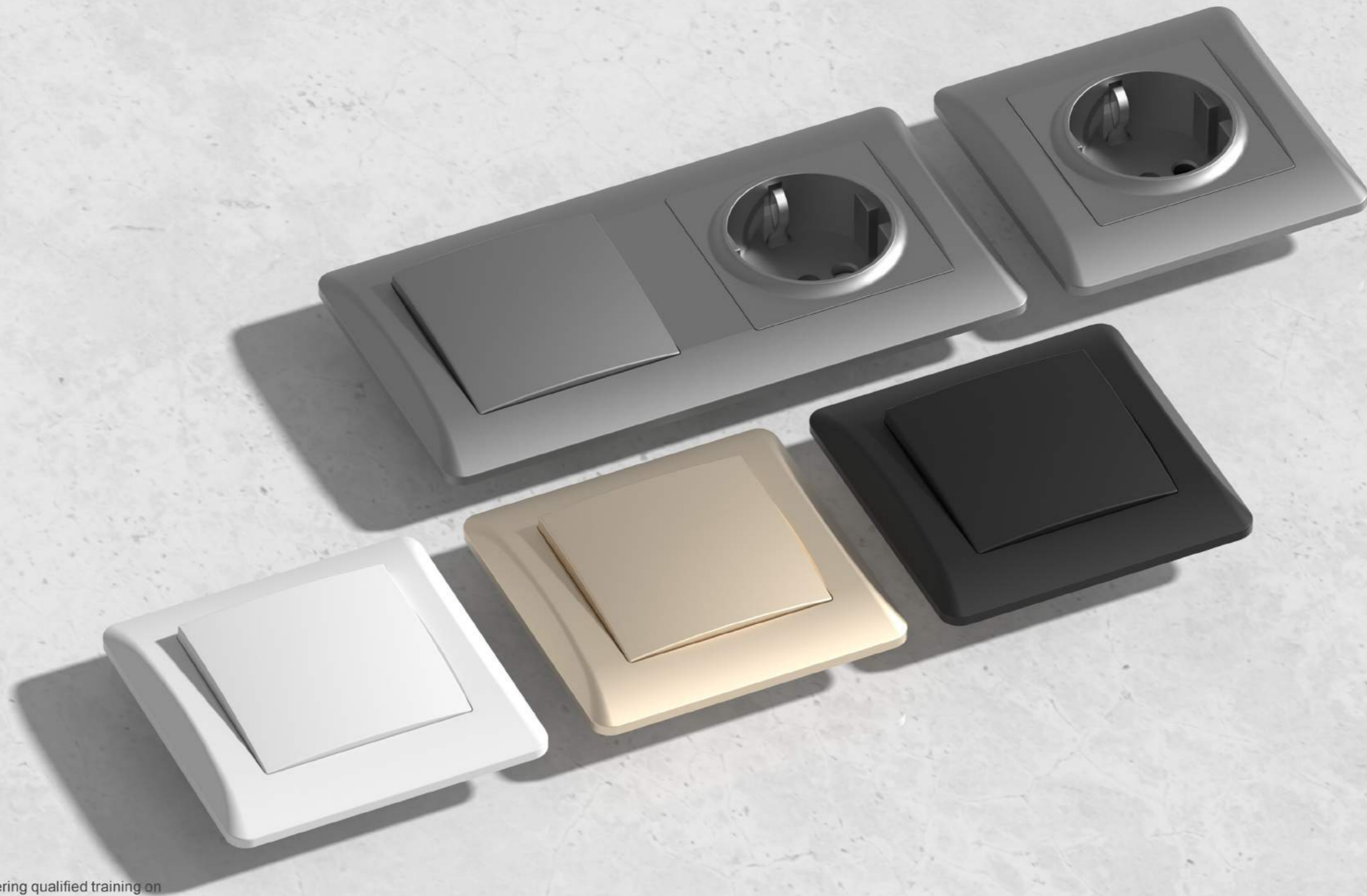


Switch socket.

Gira actively supports electricians by offering qualified training on Gira products and systems. Comprehensive product and marketing expertise is essential in order to further establish innovative switch programmes, and specifically systems for the smart home and intelligent building technology. This enhances the prospects of sales success and ensures trouble-free installation of all components.

P80 PC Series.

PeneSQniG[®]
ideas for life



Switch socket.

Gira actively supports electricians by offering qualified training on Gira products and systems. Comprehensive product and marketing expertise is essential in order to further establish innovative switch programmes, and specifically systems for the smart home and intelligent building technology. This enhances the prospects of sales success and ensures trouble-free installation of all components.

P80 PC Series.



PeneSQniG[®]
ideas for life

Switch socket.

Gira actively supports electricians by offering qualified training on Gira products and systems. Comprehensive product and marketing expertise is essential in order to further establish innovative switch programmes, and specifically systems for the smart home and intelligent building technology. This enhances the prospects of sales success and ensures trouble-free installation of all components.



P51 PC Series.

PeneSQniG[®]
ideas for life



Switch socket.

Gira actively supports electricians by offering qualified training on Gira products and systems. Comprehensive product and marketing expertise is essential in order to further establish innovative switch programmes, and specifically systems for the smart home and intelligent building technology. This enhances the prospects of sales success and ensures trouble-free installation of all components.

P51 PC Series.



PeneSQniG[®]
ideas for life



Switch socket.

Gira actively supports electricians by offering qualified training on Gira products and systems. Comprehensive product and marketing expertise is essential in order to further establish innovative switch programmes, and specifically systems for the smart home and intelligent building technology. This enhances the prospects of sales success and ensures trouble-free installation of all components.

PA51 Acrylic Series.

PeneSQniG[®]
ideas for life

Switch socket.

Gira actively supports electricians by offering qualified training on Gira products and systems. Comprehensive product and marketing expertise is essential in order to further establish innovative switch programmes, and specifically systems for the smart home and intelligent building technology. This enhances the prospects of sales success and ensures trouble-free installation of all components.



Gira System 3000 lighting control, blind timer and timer Bluetooth
Design line: Gira E3 dark grey soft touch, pure white glossy

W30 Wood grain Series.

PeneSQniG[®]
ideas for life



Switch socket.

Gira actively supports electricians by offering qualified training on Gira products and systems. Comprehensive product and marketing expertise is essential in order to further establish innovative switch programmes, and specifically systems for the smart home and intelligent building technology. This enhances the prospects of sales success and ensures trouble-free installation of all components.

W30 Wood grain Series.



PeneSQniG[®]
ideas for life



Switch socket.

Gira actively supports electricians by offering qualified training on Gira products and systems. Comprehensive product and marketing expertise is essential in order to further establish innovative switch programmes, and specifically systems for the smart home and intelligent building technology. This enhances the prospects of sales success and ensures trouble-free installation of all components.



Switch socket.

Gira actively supports electricians by offering qualified training on Gira products and systems. Comprehensive product and marketing expertise is essential in order to further establish innovative switch programmes, and specifically systems for the smart home and intelligent building technology. This enhances the prospects of sales success and ensures trouble-free installation of all components.

G51 Round Corner Glass Panel

PeneSQniG[®]
ideas for life



Switch socket.

Gira actively supports electricians by offering qualified training on Gira products and systems. Comprehensive product and marketing expertise is essential in order to further establish innovative switch programmes, and specifically systems for the smart home and intelligent building technology. This enhances the prospects of sales success and ensures trouble-free installation of all components.



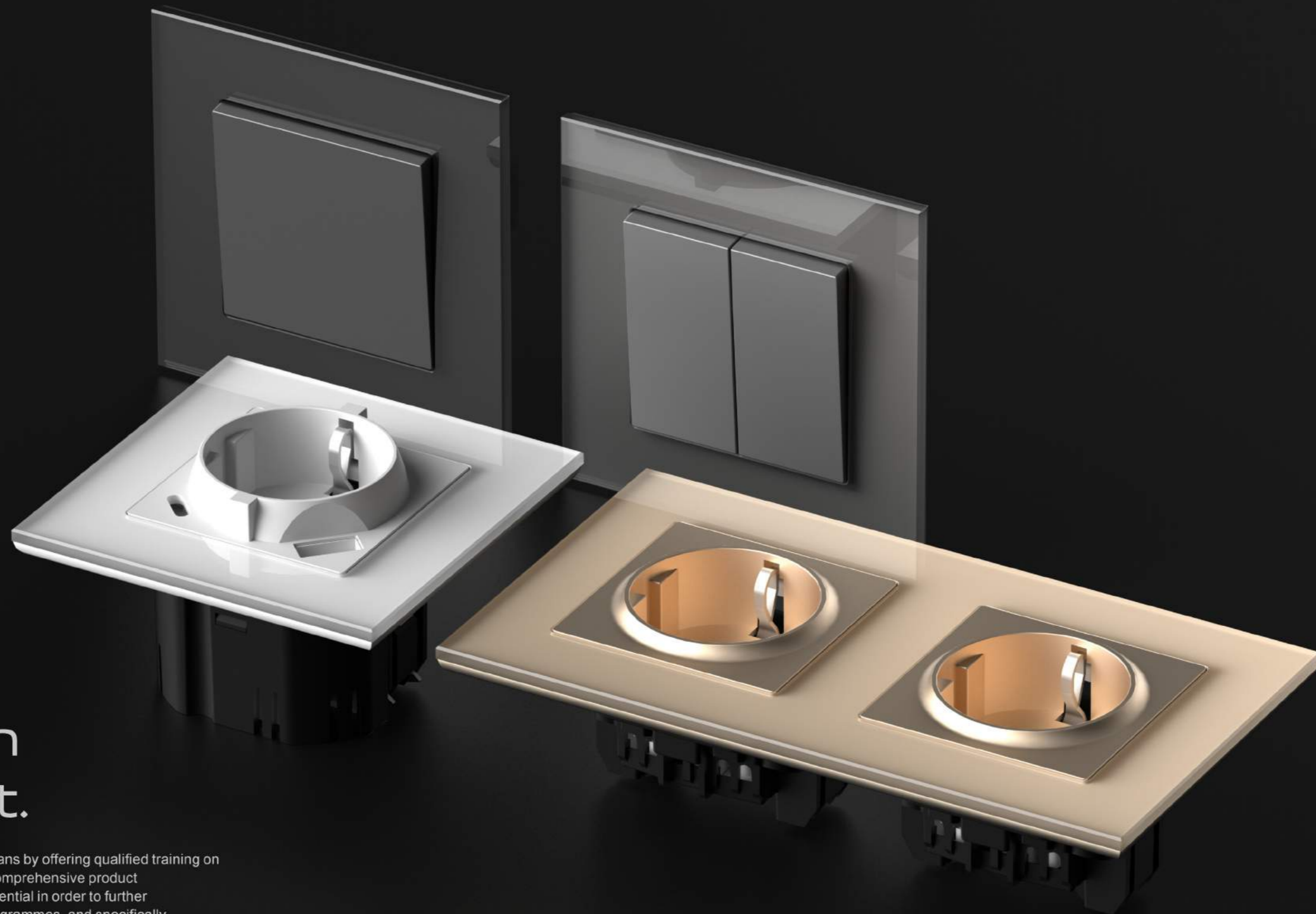
Switch socket.

Gira actively supports electricians by offering qualified training on Gira products and systems. Comprehensive product and marketing expertise is essential in order to further establish innovative switch programmes, and specifically systems for the smart home and intelligent building technology. This enhances the prospects of sales success and ensures trouble-free installation of all components.



Gira actively supports electricians by offering qualified training on Gira products and systems. Comprehensive product and marketing expertise is essential in order to further establish innovative switch programmes, and specifically systems for the smart home and intelligent building technology. This enhances the prospects of sales success and ensures trouble-free installation of all components.



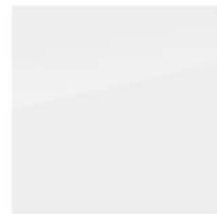


Switch socket.

Gira actively supports electricians by offering qualified training on Gira products and systems. Comprehensive product and marketing expertise is essential in order to further establish innovative switch programmes, and specifically systems for the smart home and intelligent building technology. This enhances the prospects of sales success and ensures trouble-free installation of all components.

G50 Classic Glass Panel

Gira actively supports electricians by offering qualified training on Gira products and systems. Comprehensive product and marketing expertise is essential in order to further establish innovative switch programmes, and specifically systems for the smart home and intelligent building technology. This enhances the prospects of sales success and ensures trouble-free installation of all components.



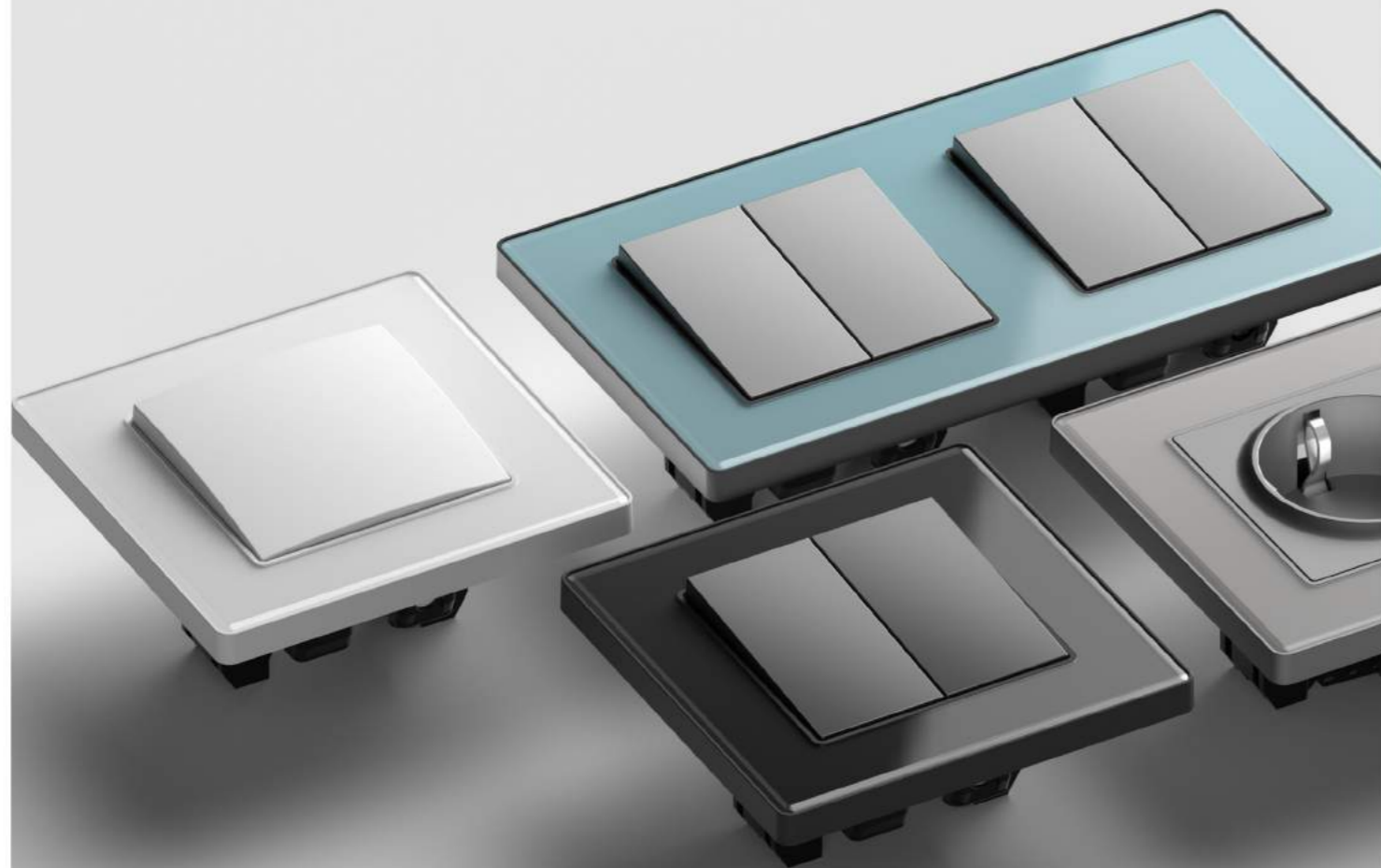
G50
Classic
Glass
Panel

G50 Classic Glass Panel



Gira actively supports electricians by offering qualified training on Gira products and systems. Comprehensive product and marketing expertise is essential.

PG51 Glass Panel

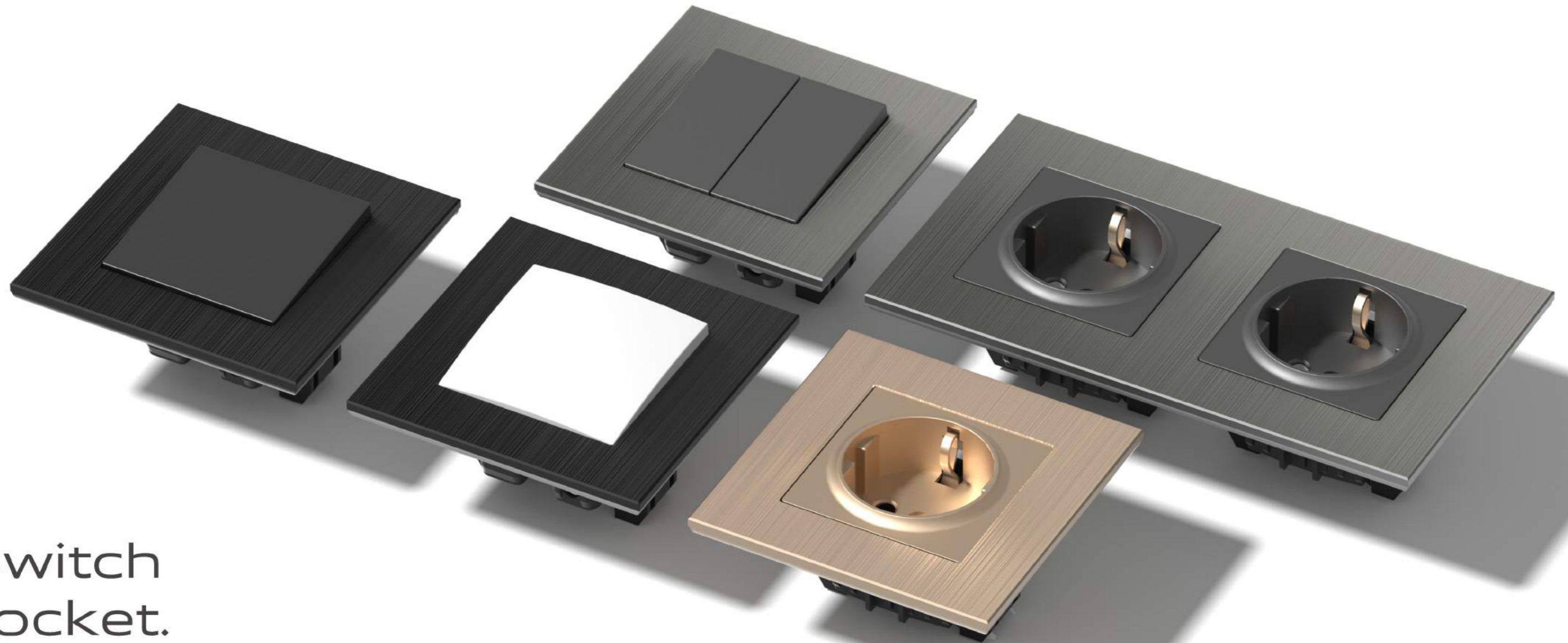


PeneSQuiG[®]
ideas for life

Switch socket.

Gira actively supports electricians by offering qualified training on Gira products and systems. Comprehensive product and marketing expertise is essential in order to further establish innovative switch programmes, and specifically systems for the smart home and intelligent building technology. This enhances the prospects of sales success and ensures trouble-free installation of all components.





Switch socket.

Gira actively supports electricians by offering qualified training on Gira products and systems. Comprehensive product and marketing expertise is essential in order to further establish innovative switch programmes, and specifically systems for the smart home and intelligent building technology. This enhances the prospects of sales success and ensures trouble-free installation of all components.

B30 Aluminum Series.

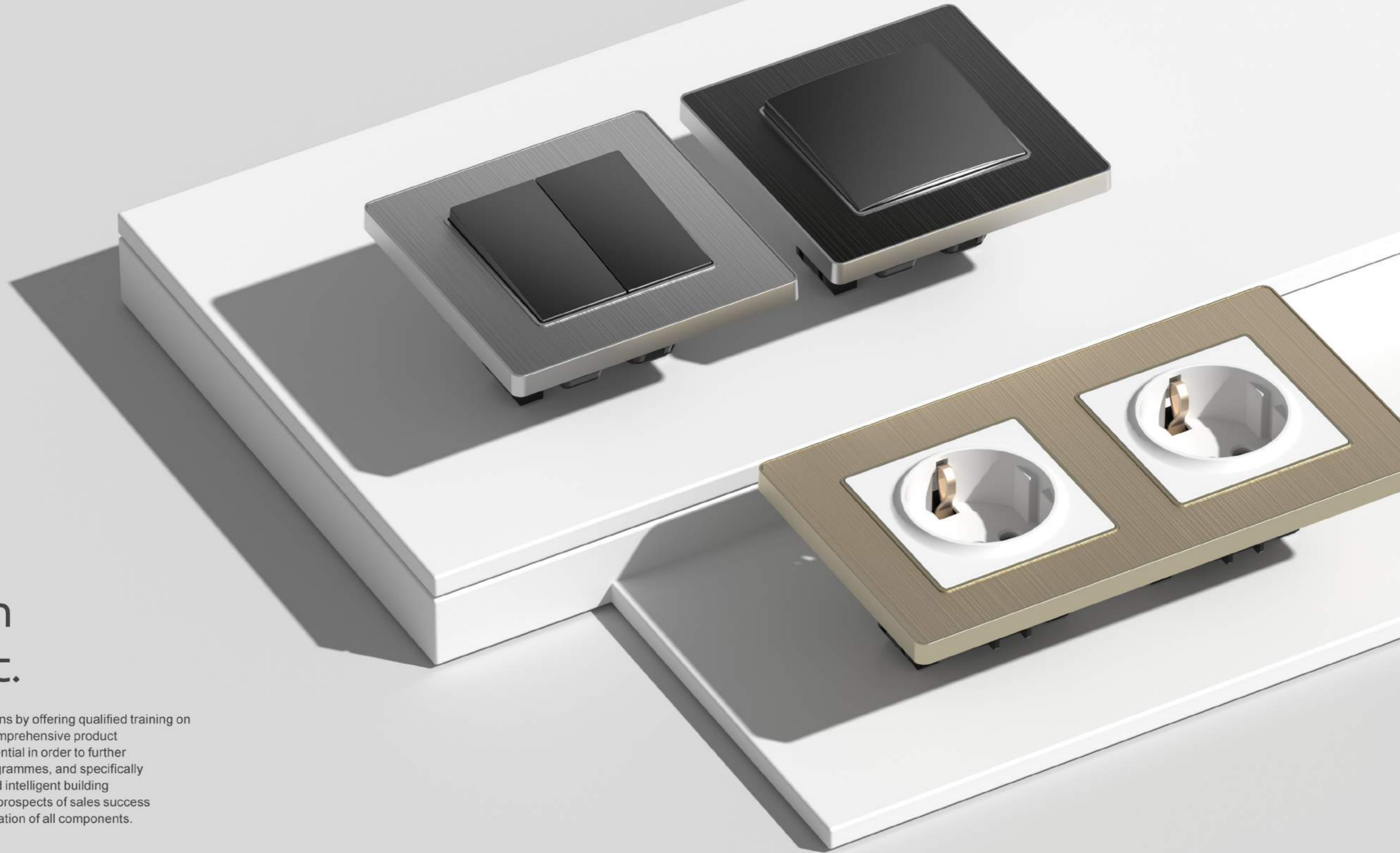


Gira actively supports electricians by offering qualified training on Gira products and systems. Comprehensive product and marketing expertise is essential in order to further establish innovative switch programmes, and specifically systems for the smart home and intelligent building technology. This enhances the prospects of sales success and ensures trouble-free installation of all components.



PS31 Stainless steel Series.

PeneSQniG[®]
ideas for life



Switch socket.

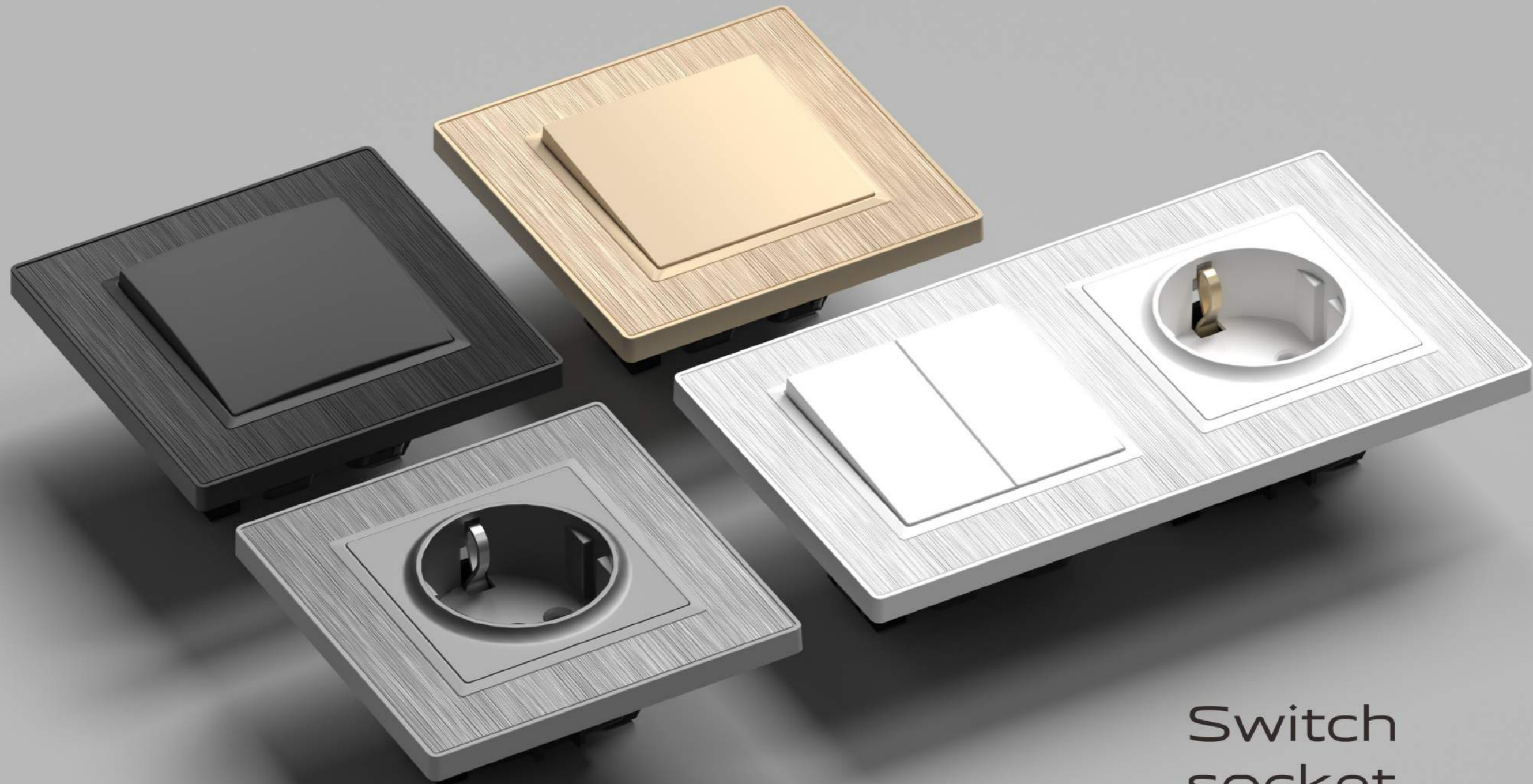
Gira actively supports electricians by offering qualified training on Gira products and systems. Comprehensive product and marketing expertise is essential in order to further establish innovative switch programmes, and specifically systems for the smart home and intelligent building technology. This enhances the prospects of sales success and ensures trouble-free installation of all components.



B31 Round Corner Brushed Aluminum Panel



Gira actively supports electricians by offering qualified training on Gira products and systems. Comprehensive product and marketing expertise is essential in order to further establish innovative switch programmes, and specifically systems for the smart home and intelligent building technology. This enhances the prospects of sales success and ensures trouble-free installation of all components.



Switch socket.

Gira actively supports electricians by offering qualified training on Gira products and systems. Comprehensive product and marketing expertise is essential in order to further establish innovative switch programmes, and specifically systems for the smart home and intelligent building technology. This enhances the prospects of sales success and ensures trouble-free installation of all components.



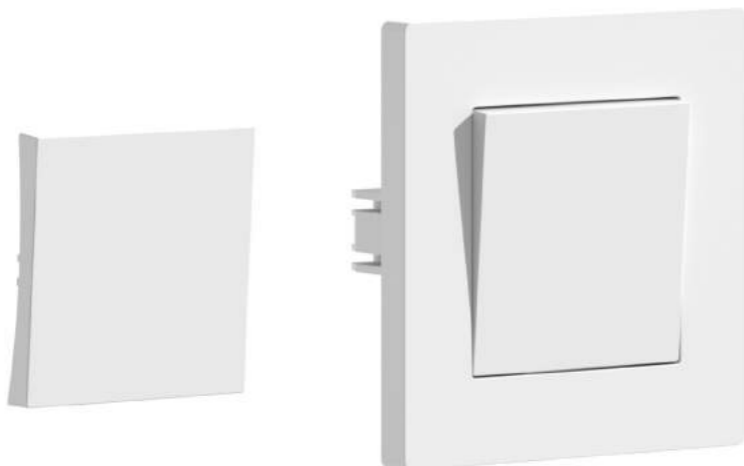
A Series

Now available in the Gira System 55: inserts and functions in stylish black matt, perfect for rounding off any sophisticated interior design that open up near unlimited versatility. From conventional switches all the way to touch sensors. Works every time.



Installation effect

Now available in the Gira System 55: inserts and functions in stylish black matt, perfect for rounding off any sophisticated interior design that open up near unlimited versatility. From conventional switches all the way to touch sensors. Works every time.



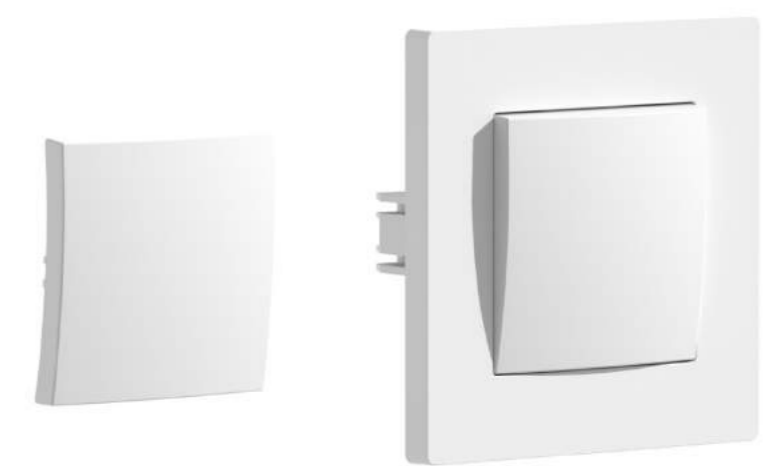
B Series

Now available in the Gira System 55: inserts and functions in stylish black matt, perfect for rounding off any sophisticated interior design that open up near unlimited versatility. From conventional switches all the way to touch sensors. Works every time.



Installation effect

Now available in the Gira System 55: inserts and functions in stylish black matt, perfect for rounding off any sophisticated interior design that open up near unlimited versatility. From conventional switches all the way to touch sensors. Works every time.





- | | | | | | |
|---|---|--|---|--|--|
| | | | | | |
| A17
Light dimmer
125-250V, 15HZ/60HZ
500W | A18
1 way LED dimmer
125-250V, 15HZ/60HZ
200W | A19
Fan speed controller
220-250V/50-60HZ
300VA | A20
Russian socket
16A, 220-250V | A21
French socket
16A, 220-250V | A22
Schuko socket
16A, 220-250V |
| | | | | | |
| A23
Dust cover schuko socket
16A, 220-250V | A24
Dust cover French socket
16A, 220-250V | A25
Schuko with double USB socket
Input: 125-250V
Output: 5.1V DC, 2.1A/2.4A | A26
USB A+C socket
Input: 125-250V
Output: 5.1V DC, 2.1A/2.4A | A27
French with double USB socket
Input: 125-250V
Output: 5.1V DC, 2.1A/2.4A | A28
French with double USB A+C socket
Input: 125-250V
Output: 5.1V DC, 2.1A/2.4A |
| | | | | | |
| A29
USB A+C socket
Input: 125-250V
Output: 5.1V DC, 2.1A/4A | A30/A31
Tel socket
CAT3
Data socket
CAT6 | A32
Double Tel socket
CAT3 | A33
Double Data socket
CAT6 | A34
Data+Tel socket
CAT3+CAT6 | A35
TV socket male
□5A, □5V |
| | | | | | |
| A36
TV socket femal
□5A, □5V | A37
Satellite socket
□5A, □5V | A38
Satellite+Data socket
□5A, □5V+CAT6 | A39
Outlet hole | A40
Blind cover | |
| | | | | | |
| A41
2 Schuko socket
16A, 220-250V | A42
2 Russian socket
16A, 220-250V | A43
2 French socket
16A, 220-250V | | | |

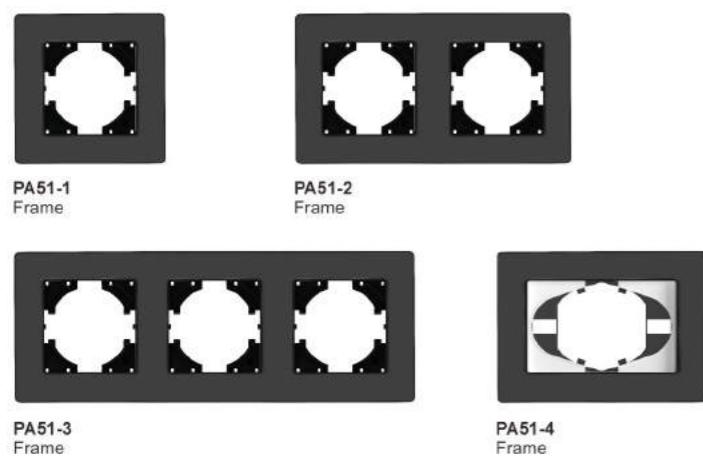
P50 PC Panel

- | | | | |
|-----------------------|-----------------------|-------|------|
| | | | |
| P50-1
Frame | P50-2
Frame | White | Gray |
| | | | |
| P50-3
Frame | Gold | Black | |
| | | | |
| P50-4
Frame | | | |
| | | | |
| P50-5
Frame | P50-6
Frame | | |

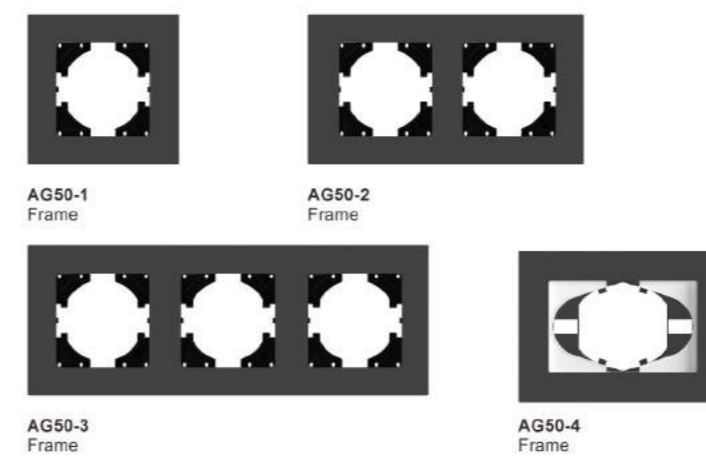
P51 PC Panel

- | | | | |
|-----------------------|-----------------------|-------|-------|
| | | | |
| P51-1
Frame | P51-2
Frame | White | Gray |
| | | | |
| P51-3
Frame | P51-4
Frame | Gold | Black |

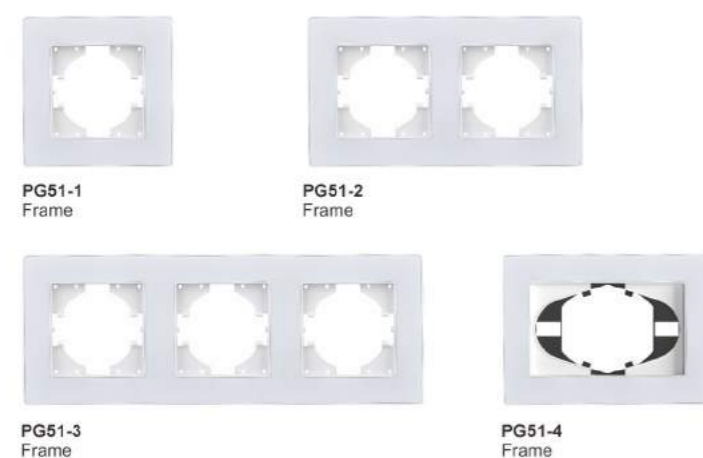
PA51 Acrylic Panel



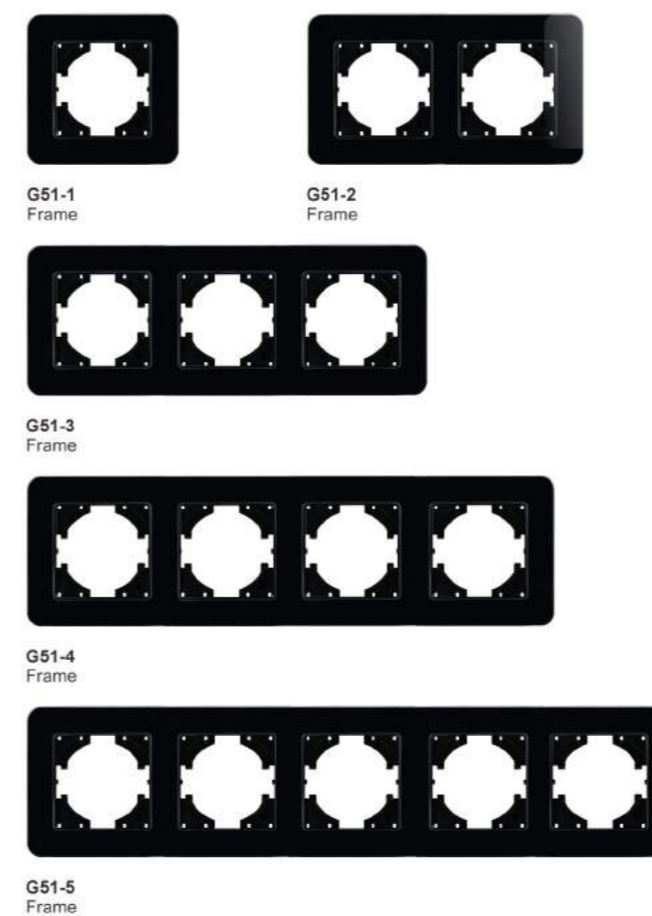
AG50 Matte Glass Panel



PG51 Ultra thing glass panel



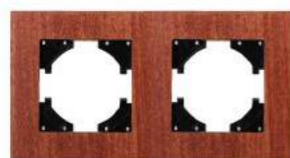
G51 Round corner glass panel



W30 Real Wood panel



W30-1
Frame



W30-2
Frame



W30-3
Frame



W30-4
Frame



Mahogany color

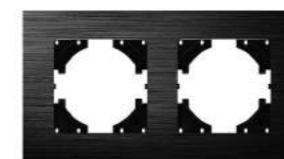


Mahogany color

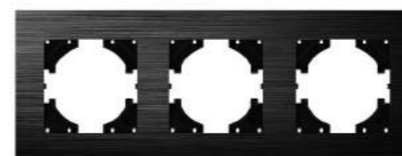
B30 Aluminum Panel



B30-1
Frame



B30-2
Frame



B30-3
Frame



B30-4
Frame



Gray



Black



Gold

P80 PC Panel



P80-1
Frame



P80-2
Frame



P80-3
Frame



P80-4
Frame



White



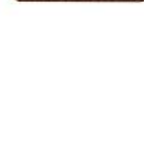
Gray



Gold



Black



G50 Classic glass panel



G50-1
Frame



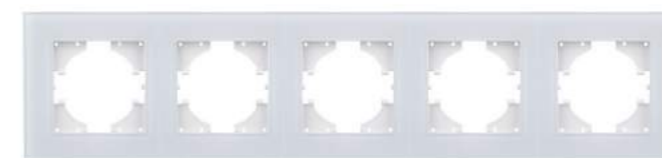
G50-2
Frame



G50-3
Frame



G50-4
Frame



G50-5
Frame



G50-6
Frame



White



Gray

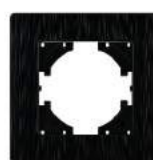


Gold

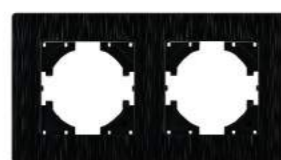


Black

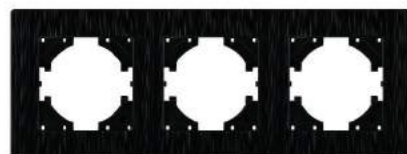
PS31 Stainless Steel Panel



PS31-1
Frame



PS31-2
Frame



PS31-3
Frame



PS31-4
Frame



Gray

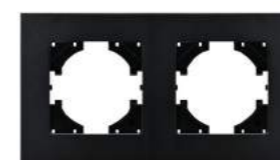


Black

BG32 Matte Aluminum Panel



BG32-1
Frame



BG32-2
Frame



BG32-3
Frame



BG32-5
Frame

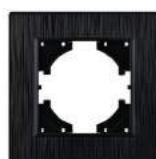


Gray

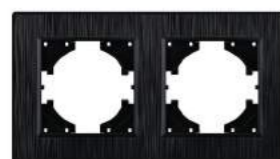


Black

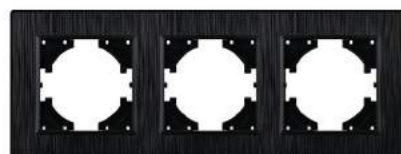
P31 Brushed PC Panel



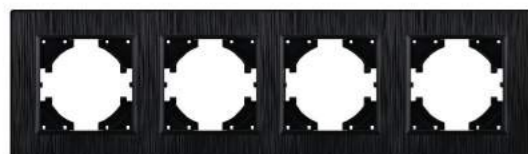
P31-1
Frame



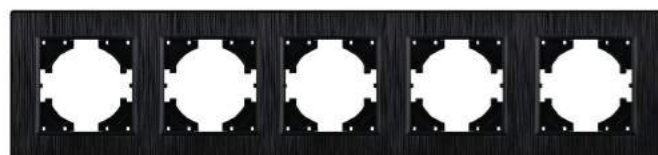
P31-2
Frame



P31-3
Frame



P31-4
Frame



P31-5
Frame



P31-6
Frame



White



Gray



Gold

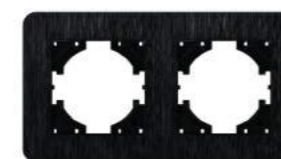


Black

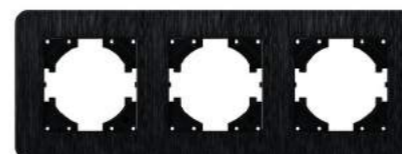
B31 Round Corner Brushed Aluminum Panel



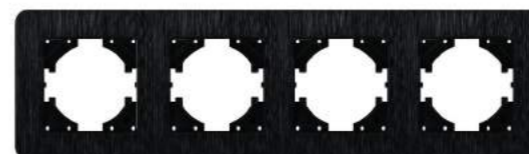
B31-1
Frame



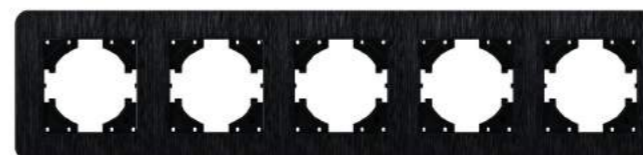
B31-2
Frame



B31-3
Frame



B31-4
Frame



B31-5
Frame



B31-6
Frame



Gray



Black